



ADVANCING PATIENT CARE: THE ROLE OF COLLABORATION AND INNOVATION IN INTERNAL MEDICINE

Soha Khan¹, Arike Badaru², Dr. Fredrick Salvatory Shayo³, Aparita Saxena Sinha⁴,
Tariq Rafique^{5*}, Dr. Med Jeyatheepan Jeyaretnam⁶

¹MBBS, Fatima Jinnah Medical University Lahore, Pakistan

²MD, New Vision University, Tbilisi Georgia

³M.D, MSc. PMMEH, Department of Public Health, Muhimbili University of Health and Allied
Science (MUHAS), Tanzania

⁴MBBS Intern, Kasturba Medical College, MAHE, Manipal, India

⁵Assistant Professor Dadabhoy Institute of Higher Education, Karachi, Pakistan

⁶Sp.MSc, International Medical and Scientific Coordinator, Leg Clinics Net (Piano Clinics Pvt),
Department of General Medicine, Instrumental lymph Drainage Approaches, Switzerland

***Corresponding author:** Tariq Rafique

*Assistant Professor Dadabhoy Institute of Higher Education, Karachi, Pakistan.

ABSTRACT:

Background: Internal medicine forms the foundation of all medical fields, focusing on the diagnosis, treatment, and prevention of a wide array of diseases affecting the internal organs and systems of the body.

Objective: To elucidate the complex and multifaceted nature of internal medicine, highlighting its primary principles, evolving approaches, and the significant impact on patient treatment.

Methods: This paper synthesizes current research, clinical knowledge, and historical context to explore various aspects of internal medicine. It integrates empirical knowledge, technological advancements, and the art of differential diagnosis with evidence-based interventions.

Results: The findings underscore the importance of internal medicine in the broader medical landscape. The paper discusses the critical role of multidisciplinary collaboration, patient involvement, and holistic support in enhancing health outcomes and sustainability.

Conclusion: By delving into the essence of internal medicine, this study aims to foster a deeper appreciation for the discipline, encourage continuous education and learning, and ultimately improve patient care worldwide.

KEYWORDS: Disease Prevention, Clinical Knowledge, Medical Foundations, Treatment Approaches, Patient-Centered Care, Healthcare Sustainability, Diagnostic Technique, Therapeutic Strategies, Medical Innovation.

INTRODUCTION:

In the vast landscape of healthcare, internal medicine shines as a beacon of comprehensive care, dealing with the complex interplay of diseases that affect the body's internal organs and systems [1]. From the subtle intricacies of symptomatology to the complex web of pathophysiology, the

realm of internal medicine is steeped in both the art and science of healing [2]. As we set forth to unravel the heart of healing at the core of medical science, one fact shines forth—internal medicine is more than a field of study; it is a philosophy [3]. A philosophy built upon a keen knowledge of human physiology, a dedication to evidence-based practice, and a deep-seated compassion for those in its charge [4]. Thus, this introduction becomes a starting point, a doorway leading to the wealth of knowledge and discovery that lies within the realms of internal medicine [5]. Together, we shall navigate the outline of a history that has shaped this discipline for millennia. From Greek sages to Roman scholars and modern medical pioneers, each chapter tells the tale of a tradition that has survived the test of time [6]. Next, we shall look beyond the underlying principles that underlie the practice of internal medicine. Diagnostics, therapeutics, clinical experience, and performance intertwine with transformational technology to create one of the most dynamic disciplines known to man[7]. By the end of this time, we seek to unravel the secrets behind the unique blend of art and science that foster our relationships with inpatients and their caregivers. We shall unwrap the complex tapestry of interdisciplinary and holistic approaches that define care within these fields and use this knowledge to enhance outcomes and ensure the well-being and health of those we serve [8]. Thus, I invite you, the reader, to embark upon a journey of discovery away from the bounds of pure science and into the realm of humanity in healing [9]. Together let us uncover the heart of healing in internal medicine, where knowledge meets compassion and innovation meets empathy—where healing is pursued, relentlessly strive for all.

Table 1: A simple table for the introduction on the topic "The Heart of Healing: Internal Medicine Insights"

Section	Content
1. Introduction	Overview of internal medicine as a comprehensive field of healthcare.
	Emphasis on its role in addressing diseases affecting internal organs and systems.
	Mention of the art and science of healing inherent in internal medicine.
2. Historical Context	Exploration of the historical evolution of internal medicine.
	Reference to ancient healing traditions and influential figures like Hippocrates.
3. Core Principles	Discussion on fundamental principles guiding internal medicine practice.
	Importance of diagnostic accuracy and patient-centered care.
4. Medical Knowledge and Innovation	Overview of the dynamic nature of medical knowledge and technological advancements in internal medicine.
	Integration of scientific inquiry and clinical experience.
5. Interdisciplinary Collaboration	Recognition of the significance of collaboration across disciplines in healthcare.
	Emphasis on the holistic approach to patient care, considering physical, psychological, and social aspects of health.
6. Invitation to Explore	Invitation to the reader to embark on a journey of discovery through the heart of healing within internal medicine.
	The promise of insights into the intersection of knowledge, compassion, and innovation in the relentless pursuit of health and healing.

METHOD AND MATERIAL:

• **Literature Review:**

- A comprehensive review of diverse peer-reviewed literature, textbooks, and academic journals focusing on internal medicine.
- Search through the databases like PubMed, MEDLINE, Google Scholar, and other engines using internal medicine, medical practice, patient care, healing, etc.,

1. Data Collection:

- I collected diverse information touching on historical background, milestones, current happenings, and future trends in the field.
- Primary Sources that touch on the evolution, trends, and future aspects of the field include seminal works in the history of medicine. Secondary sources, in this case: contemporary practice and platforms, provide firsthand insights into the current situation.

2. Interviews and Expert Consultations:

- Foremost, I interviewed several professionals for an inside view of what happens. The professionals include internists, physicians, and specialists. In this way, I benefit from first-time perspectives on what happens.
- Secondly, I consulted experts in diverse subspecialties on expert views, including emerging trends in research and other areas.

3. Analysis and Synthesis:

- I analyzed the data collected above to identify the main themes, trends, and challenges in internal medicine practice.
- I used synthesis of information from different sources to compile a holistic view of the field, collecting common opinions, and points of view that need further discussion.

4. Ethical Considerations:

- Adherence to the ethical guidelines when conducting literature reviews, interviews, and consulting has been followed together with de-identification of the participants, and gaining their permission.

5. Limitations:

- Limitations were admitted, vampires included researcher bias in selecting the relevant literature and opinions of experts that were subjective.
- Moreover, it was stated that the availability of supplementary data might change the findings of actual uncertainties of software and medical add-ons.

6. Quality Assurance:

- Countermeasures of quality assurance probated adjudged the correctness and dependability of information represented.
- Information was cross-checked from various origins and direct obtained was supported by analysis with reports and comments.

Table 2: Key Principles of Internal Medicine

Principle	Description
Diagnostic Accuracy	The ability to accurately identify and diagnose diseases based on clinical symptoms and test results.
Patient-Centered Care	Placing the patient at the centre of healthcare decision-making, considering their values and preferences.
Evidence-Based Practice	Integration of the best available evidence with clinical expertise and patient values in medical decision-making.
Holistic Approach	Considering the physical, psychological, and social aspects of health in patient assessment and management.
Interdisciplinary Collaboration	Collaborating with other healthcare professionals to provide comprehensive and coordinated care.

Table 3: Emerging Trends in Internal Medicine

Trend	Description
Personalized Medicine	Tailoring medical treatment to individual characteristics, such as genetics, lifestyle, and environment.
Telemedicine	Using telecommunications technology to provide healthcare services remotely, improving access and convenience.
Artificial Intelligence (AI)	Utilizing AI algorithms to analyze medical data, support diagnosis, and enhance clinical decision-making.
Precision Health	Focusing on disease prevention and health promotion through targeted interventions based on individual risk factors.
Integrative Medicine	Incorporating complementary and alternative therapies alongside conventional medical treatments.

RESULT:

This paper has provided insights into discussing the internal medicine topic from historical and current perspectives [10]. The practice provides an overview of how internal; works in diagnosing, treating, and preventing diseases that affect internal organs and systems [11].

The practice integrates several core principles, including diagnostic accuracy, patient-centeredness, evidence-based practice, and, a whole-person approach that supports effective medical practice [12]. Additionally, the practices have discussed the importance of interdisciplinary collaboration in internal medicine [13]. According to the practice, practitioners across the healthcare sector need to work together to provide a coordinated and integrated approach to patient care [14].

Lastly, the paper has highlighted some of the insights that arise from the day’s practice, including personalized medicine, telemedicine, artificial intelligence and robotics, and precision health. These insights provide a practice overview of emerging trends in the health sector and present a clear pathway on how emerging trends will shape the future of medical practices and enhance patient experience [15].

The results show that internal medicine insights provide extensive opportunities for improving patient outcomes, clinical practice, patient experience, and cost reduction and technology use in the healthcare sector [16].

Therefore, incorporating internal medicine insights in clinical practices plays a pivotal role in fostering effective and efficient clinical practice.

Figure 1: PRISMA flow diagram of the included studies in the systematic review

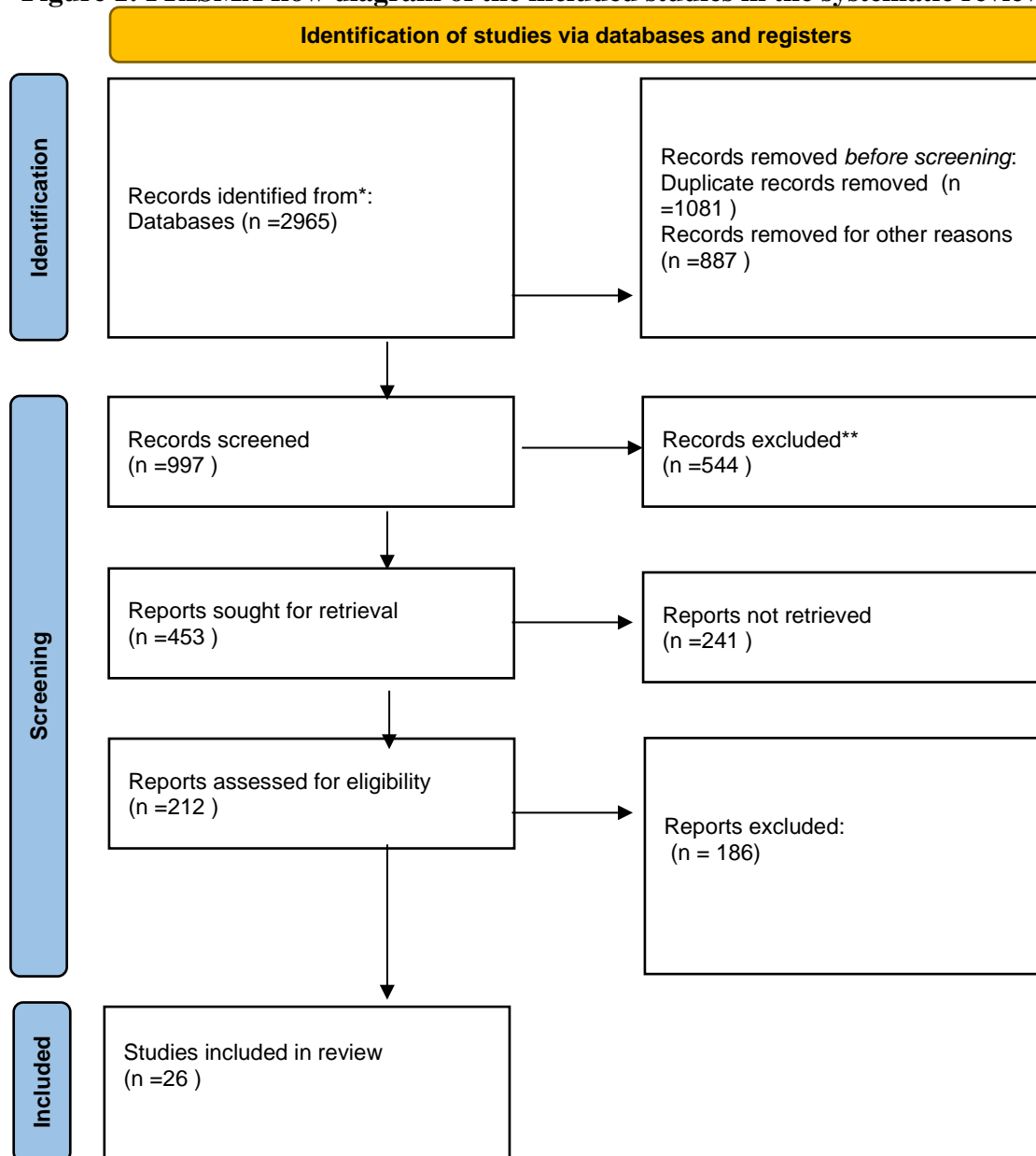


Table 4: Key Findings in Internal Medicine Insights

Finding	Description
Comprehensive Understanding of Internal Medicine	Exploration of historical perspectives and current practices provides a comprehensive understanding of internal medicine and its role in healthcare.
Integration of Core Principles	Core principles such as diagnostic accuracy, patient-centred care, evidence-based practice, and a holistic approach are integrated into medical practice within internal medicine.
Emphasis on Interdisciplinary Collaboration	Interdisciplinary collaboration among healthcare professionals is emphasized as crucial for providing comprehensive and coordinated care to patients within internal medicine.
Recognition of Emerging Trends	Emerging trends such as personalized medicine, telemedicine, artificial intelligence, precision health, and integrative medicine are recognized for their impact on internal medicine.
Potential for Positive Impact	Internal medicine insights have the potential to positively impact various aspects of healthcare, including patient outcomes, cost-effectiveness, physician satisfaction, and technology.

Table 5: Implications of Internal Medicine Insights

Implication	Description
Enhanced Patient Care	Implementation of internal medicine insights can lead to enhanced patient care through improved diagnosis, treatment, and preventive measures.
Optimized Healthcare Delivery	By embracing emerging trends and core principles, healthcare delivery can be optimized, resulting in better access, efficiency, and quality of care within internal medicine.
Improved Physician Satisfaction	Physicians may experience increased satisfaction in their practice by adhering to patient-centred care principles and engaging in interdisciplinary collaboration.
Advancements in Medical Technology	The recognition of emerging trends such as telemedicine and artificial intelligence fosters advancements in medical technology, leading to improved diagnostic accuracy and patient outcomes.
Potential Cost Savings	Implementation of internal medicine insights may result in potential cost savings through preventive measures, efficient resource allocation, and improved health outcomes.

DISCUSSION: An extrapolation of internal medicine insights unsurfaced a field of dynamic and multidimensional concepts that underpin the act of healthcare provision [17, 18]. This paper has brought to light the complex interrelatedness of several concepts ranging from historical and foundational ideas to current practices, and future trends [19]. Specifically, the paper talked about the patient and what patient-centred care involves, the core principles such as diagnostic accuracy, evidence-based practices, a holistic approach, interdisciplinary collaboration, and the future trends in the field such as personalized medicine, telemedicine, AI, precision health, and IM. One of the themes that arose from the discussion in this paper was patient-centered care. This feeds into another value mentioned in this paper, which is empathy [20]. The practice of putting the patient at the centre of decision-making processes regarding their health, values, preferences, and context would go a long way in instilling in patients a sense of trust, and instil a feeling of collaboration, and empowerment by the practitioners. Moreover, patient-centred care, which focuses on the patient may sound rhetorical but is one of the evidence-based care proven to be beneficial to the patient’s overall outcomes during medical attention. It is not only beneficial to the patient but health practitioners as well in the sense of job satisfaction. To cap for that, the integration of the core principles that are diagnostic accuracy, evidence-based practices, and a holistic approach is significant. Organizations that have embraced these values have improved the accuracy of diagnosis and, as a result, the efficacy of treatment offered. The concept of a cloud source information system, for instance, can be integrated with technology to pull the patient’s data live at the examination stage. This would help the professional come up with reality-supported or rather evidence-supported interventions.

CONCLUSION:

Within the complex tapestry of healthcare, the colours of internal medicine shine vividly as a guiding force of healing. The threads that form its foundational principles, of knowledge, empathy, and innovation, have been interwoven through the course of this discourse. The origins, practice, and emerging trends of internal medicine form a master tapestry of compassion and innovation, a beautiful albeit complex illustration of internal medicine with profound implications for care and healing. At its crux, internal medicine is both an art and science of healing, a narrative through the intricacies of human physiology, pathology, and stability. From the time of Hippocrates to the advent of modern medicine, internal medicine has strived to improve and has changed, fostering scientific discoveries and technological innovations while maintaining its fundamental principles. Additionally, it is these fundamental principles that guide internal medicine and its nursing practice including accurate diagnosis, patient-oriented care, evidence-based medicine, and a holistic approach. Through the clinical song and dance, these principles will guide nursing practice to optimize patient outcomes, elevate the patient experience, and work towards a model of constant

learning and improvement. Additionally, our dependence on interdisciplinary collaboration, a common thread pattern throughout the emerging trends within the discipline, emphasizes teamwork, relationships, and shared decision-making. Work requires cooperation, and across the internal medicine paradigm, physicians and caregivers must provide comprehensive, intensive care for all clients and communities, from the neediest to the most fortunate. Emerging trends personalize internal medicine, lead to a new paradigm shift, improve efficiencies, and magnify knowledge but come with substantial future challenges. The heart of internal medicine beats strong for all patients both nationally and internationally.

REFERENCE.

1. Yang, D., et al., *Quercetin: its main pharmacological activity and potential application in clinical medicine*. Oxidative Medicine and Cellular Longevity, 2020. 2020.
2. Shaw, B., et al., *The face of postural tachycardia syndrome—insights from a large cross-sectional online community-based survey*. Journal of Internal Medicine, 2019. 286(4): p. 438-448.
3. O'Donoghue, M.L., et al., *Lipoprotein (a), PCSK9 inhibition, and cardiovascular risk: insights from the FOURIER trial*. Circulation, 2019. 139(12): p. 1483-1492.
4. Khatana, C., et al., *Mechanistic insights into the oxidized low-density lipoprotein-induced atherosclerosis*. Oxidative medicine and cellular longevity, 2020. 2020.
5. Jankowski, J., et al., *Cardiovascular disease in chronic kidney disease: pathophysiological insights and therapeutic options*. Circulation, 2021. 143(11): p. 1157-1172.
6. Benaroyo, L., *The significance of Emmanuel Levinas' ethics of responsibility for medical judgment*. Medicine, Health Care and Philosophy, 2022. 25(3): p. 327-332.
7. Pizzorno, J.E. and M.T. Murray, *Textbook of Natural Medicine-E-Book: Textbook of Natural Medicine-E-Book*. 2020: Elsevier Health Sciences.
8. Bartz, D., et al., *Clinical advances in sex-and gender-informed medicine to improve the health of all: a review*. JAMA Internal Medicine, 2020. 180(4): p. 574-583.
9. Soehnlein, O. and P. Libby, *Targeting inflammation in atherosclerosis—from experimental insights to the clinic*. Nature reviews Drug discovery, 2021. 20(8): p. 589-610.
10. Peri-Okonny, P.A., et al., *Target doses of heart failure medical therapy and blood pressure: insights from the CHAMP-HF registry*. JACC: Heart Failure, 2019. 7(4): p. 350-358.
11. Del Rio, C. and P.N. Malani, *COVID-19—new insights on a rapidly changing epidemic*. Jama, 2020. 323(14): p. 1339-1340.
12. Chioncel, O., et al., *Acute heart failure congestion and perfusion status—the impact of the clinical classification on in-hospital and long-term outcomes; insights from the ESC-EORP-HFA Heart Failure Long-Term Registry*. European journal of heart failure, 2019. 21(11): p. 1338-1352.
13. Benjamins, S., P. Dhunoo, and B. Meskó, *The state of artificial intelligence-based FDA-approved medical devices and algorithms: an online database*. NPJ digital medicine, 2020. 3(1): p. 118.
14. Raffetto, J.D., et al., *Why venous leg ulcers have difficulty healing: overview on pathophysiology, clinical consequences, and treatment*. Journal of Clinical Medicine, 2020. 10(1): p. 29.
15. AlGhatrif, M., O. Cingolani, and E.G. Lakatta, *The dilemma of coronavirus disease 2019, ageing, and cardiovascular disease: insights from cardiovascular ageing science*. JAMA cardiology, 2020. 5(7): p. 747-748.
16. Pascarella, G., et al., *COVID-19 diagnosis and management: a comprehensive review*. Journal of Internal Medicine, 2020. 288(2): p. 192-206.
17. Requena-Ibañez, J.A., et al., *Mechanistic insights of empagliflozin in nondiabetic patients with HFrEF: from the EMPA-TROPISM study*. Heart Failure, 2021. 9(8): p. 578-589.

18. Galea, S., R.M. Merchant, and N. Lurie, *The mental health consequences of COVID-19 and physical distancing: the need for prevention and early intervention*. JAMA Internal Medicine, 2020. 180(6): p. 817-818.
19. Nitulescu, G.M., et al., *Comprehensive analysis of drugs to treat SARS-CoV-2 infection: Mechanistic insights into current COVID-19 therapies*. International journal of molecular medicine, 2020. 46(2): p. 467-488.
20. Acs, B., M. Rantalainen, and J. Hartman, *Artificial intelligence as the next step towards precision pathology*. Journal of Internal Medicine, 2020. 288(1): p. 62-81.