



## Efficacy of different irrigating solution on smear layer removal of primary teeth root canals - A SEM study

Dr. Sandhya Chaurasiya<sup>1</sup>, Dr. Saurabh Satyarth<sup>2</sup>, Dr. Rishi Thukral<sup>3</sup>,  
Dr. Heeralal Chokotiya<sup>4</sup>

<sup>1</sup>Dental Surgeon, Civil hospital Khurai, Sagar, M.P. India

<sup>2</sup>Ex. Resident doctor, Department of Dentistry, Government Medical College and Hospital, Bettiah, Bihar, India

<sup>3</sup>Associate Professor, Department of Dentistry, Atal Bihari Vajpayee Government Medical College, Vidisha, M.P. India

<sup>4</sup>Assistant Professor, Department of Dentistry, Atal Bihari Vajpayee Government Medical College, Vidisha, M.P. India

**Corresponding Author:** Dr. Heeralal Chokotiya, Assistant Professor, Department of Dentistry, Atal Bihari Vajpayee Government Medical College, Vidisha, M.P. India  
Email: drheeralalchokotiya@gmail.com

---

### Abstract

**Objectives:** The purpose of this in vitro study was to evaluate the effectiveness of MTAD, 0.9% normal saline, 5.25% sodium hypochlorite, and ginger extract as the last irrigant in the elimination of the smear layer in the coronal, middle, and apical thirds of primary teeth root canals following manual instrumentation.

**Materials and methods:** Using a 40# k file, 28 human extracted primary teeth were then randomly split into four groups (n=7), with the final irrigants being 0.9% normal saline, 5.25% sodium hypochlorite, MTAD, and ginger extract. After splitting the decoronated teeth in half

lengthwise, the amount of smear layer covering the dentinal surface was measured. SEM pictures were captured, data were examined using the student t test, Chi-square test, and Kruskal-Wallis test, and scoring was carried out according to Rome et al. criteria.

**Result:** Intergroup comparison shown statistically significant difference in all thirds with Biopure MTAD ( $p < 0.0001$ ) compared with other groups.

**Conclusion:** Biopure MTAD is an effective solution for the removal of the smear layer and the Ginger extract is an herbal alternative as root canal irrigant in primary teeth.

**Keyword:** Irrigating solutions, Smear layer, SEM and primary teeth

**Introduction:** In pediatric dentistry, preserving the integrity of the primary dentition is paramount. Preserving the primary dentition until it undergoes normal exfoliation is crucial for the development of the dentofacial complex.<sup>1</sup> In case of irreversible pulpitis, pulpectomy is a successful meaning to retain the teeth in terms of function, esthetics, arch length, space management and symmetry.<sup>2</sup> In Root canal therapy, biomechanical preparation is a fundamental step in cleaning the root canals but canal ramification in primary tooth makes the its debridement difficult. Therefore, it is imperative to use auxiliary solutions that promote disinfection of these areas, mainly because infected primary teeth can harbor micro-organisms inside the dentinal tubules.<sup>3</sup> Using tools in biomechanical preparations and irrigating solutions to remove microorganisms and pulp debris is crucial to the outcome of endodontic treatment.<sup>4</sup>

Smear layer, an amorphous structure made of both organic and inorganic materials that covers the dentinal walls of root canals and smear plugs located in the depths of dentinal tubules, is created during root canal instrumentation. The tooth structure and a few non-specific inorganic impurities make up the inorganic material in the smear layer, whereas the heated coagulated proteins, necrotic or viable pulp tissue, odontoblastic processes, saliva, blood cells, and microorganisms could be the organic components.<sup>5</sup> The removal of the smear layer requires organic and inorganic solvents,<sup>6</sup> which are known as endodontic irrigants. The two most often utilised root canal irrigants are sodium hypochlorite and normal saline. Physiological saline is ineffective at eliminating the smear layer and dentinal debris. Sodium hypochlorite will disintegrate organic tissue but has not been demonstrated to be an efficient smear layer remover at concentrations of 1.0 to 5.25%.<sup>7</sup> Because of its chelating activity, EDTA and citric acid are the most often utilised irrigants to eliminate smear layer.<sup>8</sup> However, the application of higher concentration of citric acid and EDTA irrigation for more than 1 minute and in volume more

than 1 ml has been reported to be associated with dentinal erosion.<sup>9</sup> BioPure MTAD has been introduced to dentistry as a final irrigant for smear layer removal.

The several undesirable characteristics of commonly used root canal irrigants are tissue toxicity, risk of emphysema, allergic potential, disagreeable smell and taste, has prompted researchers to look for herbal alternatives such as *Morinda Citrifolia*<sup>10</sup>, Neem leaf Extract (*Azadirachta indica*)<sup>11</sup>, Triphala and Green tea polyphenols<sup>12</sup>, German Chamomile<sup>13</sup>. Hence the use of ginger extract (*Zingiber Officinale*) as endodontic irrigant has been used in present study.

The purpose of this study was to assess the effectiveness of different irrigating solutions, such as MTAD, 0.9% normal saline, 5.25% sodium hypochlorite, and ginger extract, as final irrigants in the removal of the smear layer in the coronal, middle, and apical thirds of primary teeth root canals following manual instrumentation.

**Material and Method:** The Institutional Ethical Committee gave its clearance before this in vitro investigation started. The study was done on 28 extracted single rooted deciduous teeth; the samples were divided randomly into four groups (7 teeth in each group) depending on the final irrigant solution as follows: Group I- 0.9% Normal Saline (used as a negative control group) (Inven Pharmaceutical Pvt. Ltd., Dist. Dhar, M.P.), Group II- 5.25% Sodium hypochlorite (Vensons India, Bangalore), Group III- Biopure MTAD, Mixture of Tetracycline, an Acid (Citric Acid) and Detergent (Tween 80) (Dentsply, Tulsa Dental specialist, U.S.), Group IV- Alcoholic extract of Ginger. (Fresh Ginger extract, Prepared in Daksh Laboratory, in soxhlet apparatus).

Single-rooted deciduous teeth that had been extracted were taken out of patients who had visited the Hitkarini Dental College and Hospital in Jabalpur, MP, India, as well as other hospitals. The teeth had been extracted for a variety of reasons, including trauma, over retention of teeth, orthodontic extraction, and extraction of primary incisors that had at least two thirds of their roots left intact. Teeth with abnormal root morphology, internal resorption and those that are endodontically treated were excluded from the study. Extracted human deciduous single rooted teeth were collected, disinfected and stored in 0.9% saline at 4°C till further use and handled as per the recommendation and the guidelines laid down by Center for Disease Control (CDC).

**Preparation of Ginger Extract:** Small pieces of fresh ginger were cut, then dipped and cleaned in distil water. After adding 50 millilitres of ethylene diethyl ether to 20 grammes of finely

chopped ginger, the mixture was heated to 60 to 65 degrees Celsius for a full day of Soxhlet extraction. The resulting extract of ginger was concentrated by evaporation of solvent (ethylene di ethyl ether) completely, at under reduced pressure by Lyotrap dryer (LTE Scientific Ltd, London).

**Specimen preparation:** 28 extracted human deciduous anterior teeth were decoronated at the level of the cemento-enamel junction (CEJ) and superficial grooves were placed mesiodistally along the longitudinal axis in cementum not extending to the root canal, using diamond disk (UKAM, USA) mounted on a low speed hand piece, to facilitate smooth split in the latter stages for scanning electron microscopic examination. Instrumentation was done with separate set of 'K' files (Mani, Prime Dental Product Pvt Ltd.) for each group. #10 K-file was placed in the canal until it was just visible at the apical foramen. The working length was established by reducing 1 mm from this point. Bio-mechanical preparation was performed using step-back technique with file numbers sequentially #15, #20, #25, #30, #35 and #40 in the entire working length of the canal. Between every instrument, irrigation was performed with 3ml of 0.9% Normal Saline for 10 seconds. The instrument was only exchanged for another of larger diameter when the previous one moved freely inside the canal. In the present study, for irrigation, 26 gauge needles were used and the depth of the irrigation needle was calculated by reducing 2 mm from the working length.

Before final irrigation, the apical ends of the root were sealed with sticky wax, to stimulate an in vivo apical counter pressure and to prevent extrusion of irrigant through the apical foramen. Following this, on the basis of final irrigation, the samples were divided randomly into four groups as follows:

Group I (0.9% Normal saline): 7 teeth were taken in the group and canals were finally irrigated with 5 ml of 0.9% Normal saline for 5 min in combination with manual agitation using #40 gutta percha cone.

Group II (5.25% Sodium Hypochlorite): 7 teeth were taken in the group. Each root canals was flooded with 1ml of 5.25% Sodium Hypochlorite solution, in combination with manual agitation using #40 gutta percha cone and then slow flushing of remaining 4ml irrigant, for 5 min.

Group III (Biopure MTAD, Mixture of Tetracycline, an Acid, Citric acid and Detergent, Tween 80): 7 teeth were taken in the group. Each root canals was then flooded with 1ml of Biopure

MTAD, in combination with manual agitation using #40 gutta percha cone and then slow flushing of remaining 4ml irrigant, for 5 min.

Group IV (alcoholic extract of Ginger): 7 teeth were taken in the group. Each root canals was flooded with 1ml of Ginger Extract, in combination with manual agitation using #40 gutta percha cone and then slow flushing of remaining 4ml irrigant, for 5 min.

The solution is agitated with the help of #40 gutta percha to facilitate the solution all over the canal surface. All the samples were finally irrigated with 10 ml of distilled water to avoid sedimentation of crystals within the canals (except for Biopure MTAD) and dried with absorbent paper point #40.

Specimen sections: The teeth were split longitudinally, with the aid of a BP knife (blade #15) and a surgical mallet, through the previously placed grooves and half of each tooth was placed in a 2% glutaraldehyde solution for 24 h. The other half of each tooth was discarded. Then the samples were transferred to the testing lab in a sterilized plastic container without any contamination for scanning electron microscopic analysis. The tooth were dehydrated with ascending concentrations of ethyl alcohol (70%, 90%, 95% and twice at 100%) and placed in a desiccator for at least 24 h. The whole dehydration procedure was done in Daksh Laboratory, Jabalpur (M.P.).

**Examination under Scanning Electron Microscope:** The dried specimens were, mounted on metallic stubs, sputter coated with ~ 35 nm layer of gold-palladium particles, to render a conductive surface, and evaluated under a scanning electron microscope (SEM) (FEI Quanta 200; Tokyo, Japan) at magnifications of 2,000X at the coronal third, middle third and apical third of the dentinal surface. A standardized series of photographs at a 2000X magnification was obtained at coronal, middle, apical third for comparative purpose. The scanning electron microscopic images were analyzed according to rating criteria system developed by Rome et al.<sup>14</sup>, a score of 0- No smear layer, all dentinal tubules open and no erosion of tubules, 1- No smear layer, all dentinal tubules open and erosion of tubules, 2-Minimum smear layer > 50% dentinal tubules visible. 3- Moderate smear layer< 50% of dentinal tubules open and 4- Heavy smear layer; outline of dentinal tubules obliterated.

**Result:** The pictures from the scanning electron microscopy showed ( Figure 1,2,3,4) that among the tested irrigants Scores attributed to each specimen in the three thirds of the canals and using SPSS software, the data obtained (Table-1 and graph 1) were subjected to statistical analysis

using Kruskal-Wallis test, Chi-square test and Student T test (Table 2, 3). The Ginger extract (Group IV) has significantly less mean score (table 1) with respect to all thirds when compared to Normal saline (Group I) and 5.25% NaOCl (Group II) but significantly more when compared to Biopure MTAD (Group III).

In coronal third the mean rank (table 2) of Biopure MTAD was significantly lower from each respective groups and statistically it was highly significant ( $\chi^2 = 21.287$ ;  $p < 0.0001$ ). The lower ranks of smear layer removal efficacy confirms the accuracy of the Biopure MTAD followed by Ginger extract then Sodium hypochlorite and least for normal saline. At middle third the mean rank of smear layer removal were found as 22.00 for Normal saline, 19.71 for 5.25% Sodium hypochlorite, 4.50 for Biopure MTAD and 11.79 for Ginger extract. The mean rank at middle third was also lowest for Biopure MTAD and statistically it was highly significant ( $\chi^2 = 22.595$ ;  $p < 0.0001$ ).

At apical third the mean ranks was 21.50 for Normal saline, 20.14 for 5.25% Sodium hypochlorite, 4.00 for Biopure MTAD and 12.36 for Ginger extract. Biopure MTAD produced the lowest rank of score and statistically it was highly significant ( $\chi^2 = 22.693$ ;  $p < 0.0001$ ).

Comparison between group III (Biopure MTAD) with all other groups (table3) showing highly significant result ( $p < 0.0001$ ) followed by Group IV (Ginger extract) followed by Group II (5.25% sodium hypochlorite) and then Group I (Normal saline).

**Table 1: Mean value scores and standard deviation of the groups at coronal, middle and apical third**

Group I (normal saline)	3.86 ± 0.378	4.00 ± 0.000	4.00 ± 0.000
Group II (5.25% sodium hypochlorite)	3.43 ± 0.787	3.71 ± 0.488	3.86 ± 0.378
Group III (Biopure MTAD)	0.00 ± 0.000	0.00 ± 0.000	0.00 ± 0.000
Group IV (ginger extract)	2.43 ± 0.787	2.14 ± 1.215	2.86 ± 0.690

**Table 2: Mean rank of all experimental group at respective third using Kruskal-Wallis test and Chi-Square test**

Efficacy of different irrigating solution on smear layer removal of primary teeth root canals - A SEM study

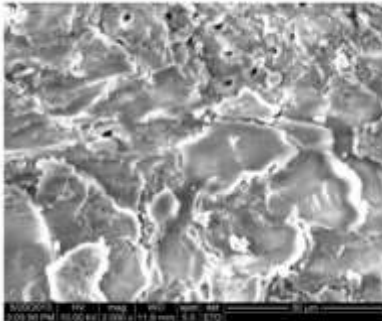
	Group	N	Mean Rank	Chi-Square test	df	Asymp. sig
Coronal third	Normal saline (Group I)	7	21.93	21.387	3	0.0001
	5.25% sodium hypochlorite (Group II)	7	19.07			
	Biopure MTAD(Group III)	7	4.00			
	Ginger extract (Group IV)	7	13.00			
Middle third	Normal saline (Group I)	7	22.00	22.595	3	0.0001
	5.25% sodium hypochlorite (Group II)	7	19.71			
	Biopure MTAD (Group III)	7	4.50			
	Ginger extract (Group IV)	7	11.79			
Apical third	Normal saline (Group I)	7	21.50	23.693	3	0.0001
	5.25% sodium hypochlorite (Group II)	7	20.14			
	Biopure MTAD (Group III)	7	4.00			
	Ginger extract (Group IV)	7	12.36			

**Table 3: Overall intercomparison of all four groups using Student T test**

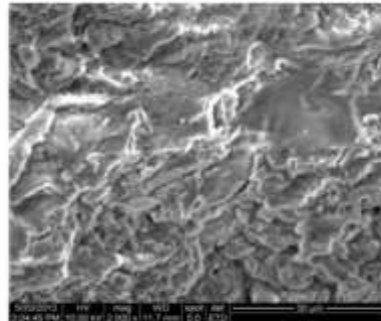
S.no	Comparison of groups	T	P
1	Group I vs Group II	2.12	p>0.05
2	Group I vs Group III	83.00	p<0.0001
3	Group I vs Group IV	5.19	p<0.001

Efficacy of different irrigating solution on smear layer removal of primary teeth root canals - A SEM study

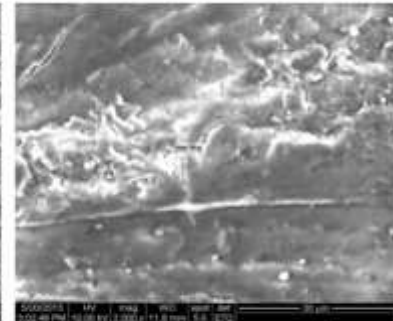
4	Group II vs Group III	29.10	p<0.0001
5	Group II vs Group IV	3.87	p<0.05
6	Group III vs Group IV	8.83	p<0.0001



**Fig-1(a) Apical**

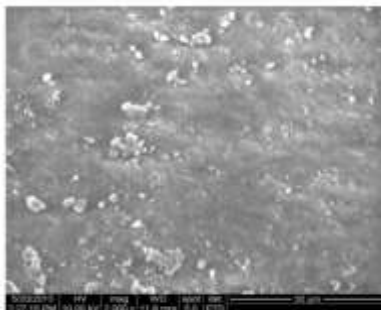


**Fig-1(b) Middle**

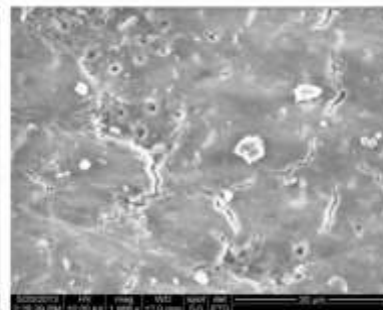


**Fig-1(c) Coronal**

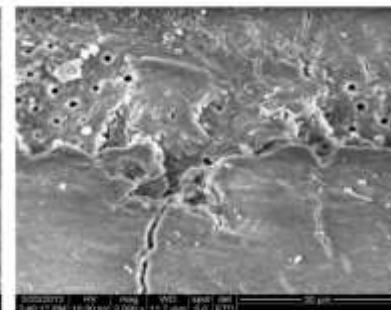
**Figure 1:** SEM view after normal saline (Group I) irrigation: A) apical, B) middle, c) coronal of the prepared specimens



**Fig-2(a) Apical**



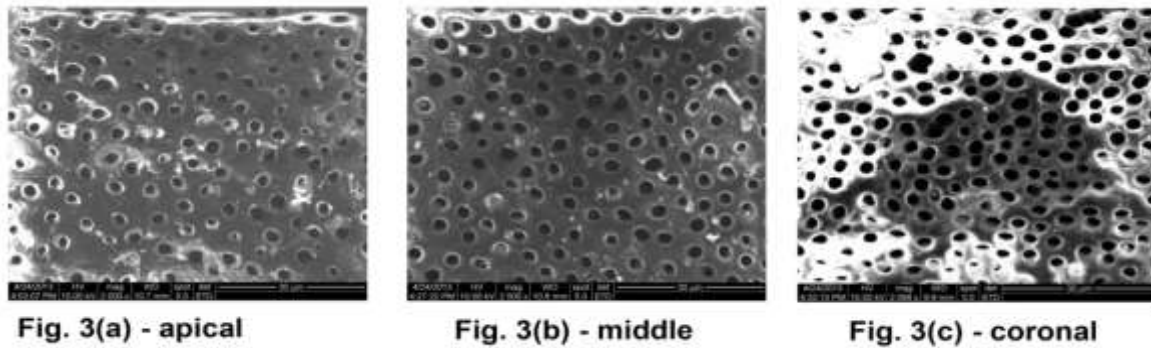
**Fig-2(b) Middle**



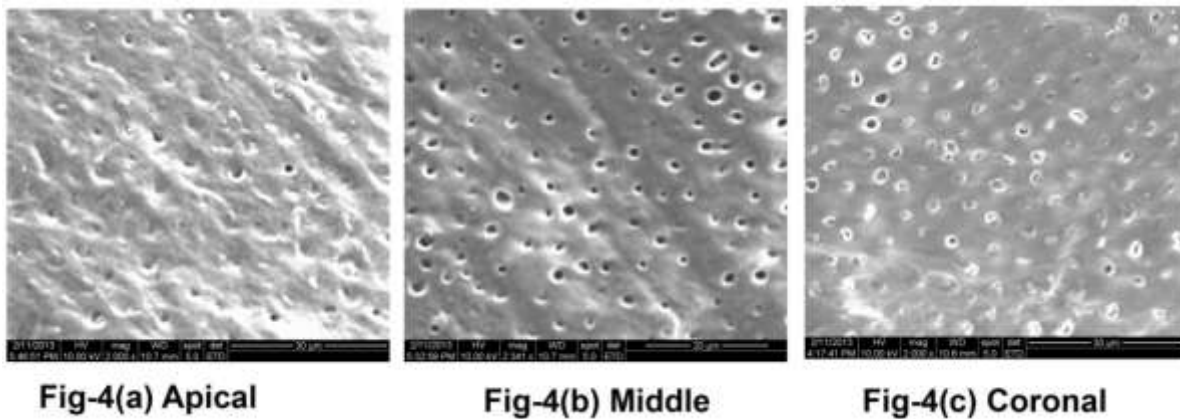
**Fig-2(c) Coronal**

**Figure 2:** SEM view after after 5.25% sodium hypochlorite (Group II) irrigation : A) apical, B) middle, c) coronal of the prepared specimens





**Figure 3:** SEM view after Biopure MTAD (Group III) irrigation: A) apical, B) middle, c) coronal of the prepared specimens



**Figure 4:** SEM view after Ginger extract (Group IV) irrigation : A) apical, B) middle, c) coronal of the prepared specimens

**Discussion:** The root canal surfaces are covered in a smear layer created by current endodontic instrumentation techniques. Both organic and inorganic components can be found in the smear layer, including necrotic materials, microbes and their byproducts, and pieces of odontoblastic processes.<sup>15</sup> The smear layer is made of particles ranging in size from less than 0.5–15  $\mu\text{m}$ . Smear layer, being a loosely adherent structure, should be completely removed from the surface of the root canal wall because it can harbour bacteria and provide an avenue for leakage. It may also limit the effective disinfection of dentinal tubules by preventing sodium hypochlorite, calcium hydroxide and other intracanal medicaments from penetrating the dentinal tubules.<sup>16</sup> Because of potential contamination and adverse effect of the smear layer on the

outcome of root canal therapy, it seems reasonable to suggest removal of the smear layer for disinfection of the entire root canal system.

Currently available procedures for removing smear layers include chemical, ultrasonic, and laser approaches; however, none of these are completely successful or have gained widespread recognition.<sup>17</sup> The importance of irrigation as a method of removing smear layer from the root canal is well recognized because it has been shown that when instrumentation was carried out without irrigation, 70% debris remained in the root canal. Smear layer could lead to loss of working length, hindered penetration of the intracanal medicaments, sealants and increases the chances of microleakage and forcing the debris into the periapical region.<sup>18</sup> The efficiency of the smear layer removal is related to both, the type of the irrigant used and the method of flushing.<sup>19</sup>

Numerous research are documented in the literature that clarify the process of removing the smear layer from permanent root canals, and definitive recommendations are delineated for the removal of the smear layer from permanent teeth. However, there is a dearth of research on the removal of primary teeth's smear layer. However, only limited studies have been done regarding removal of smear layer in primary teeth. Thus the present study was conducted to assess the efficacy of 0.9% Normal Saline, 5.25% Sodium Hypochlorite, Biopure MTAD and Ginger extract as final irrigant in the removal of the smear layer in the coronal, middle, and apical thirds of the root canals of primary teeth after hand instrumentation.

Sodium hypochlorite used in this study, is a weak alkaline/ base that acts on the albumin (remains of pulpal tissue, foods and microorganisms), denaturing them and turning them soluble in water. Like soap, it facilitates the removal of debris from the root canals and, in spite of being a necrosis agent (to act on organic matter) it is little poisonous or irritating to the live tissues. The NaOCl alkali contacting with organic products in decomposition liberates chlorine and nascent oxygen that promote bactericidal action.<sup>20</sup>

Biopure MTAD used in this study was invented by Torabinejad et al (2003), a new irrigating solution containing 3 % doxycycline hyclate, 4.25 % citric acid and 0.5 % Polysorbate 80 (Tween 80) detergent, represents an innovative approach in simultaneous removal of the endodontic smear layer and disinfection of root canals. They said that MTAD does not

significantly change the structure of the dentinal tubules when canals are irrigated with Sodium Hypochlorite followed by final rinse of Biopure MTAD. Studies on the use of this effective irrigant, Biopure MTAD on deciduous teeth are still required and are in progress.

Ginger extract was chosen as an experimental group in this study. History of ginger and its applications were well documented, Ginger (*Zingiber officinale*, F. Zingiberaceae) has been listed as “Generally Recognized as Safe” (GRAS) document in Food Drug Administration. Its healing ability, antiinflammatory and antimicrobial activity is well documented in endodontics<sup>21,22,23</sup> but still further investigation for other properties are required.

Scanning electron microscopic pictures of 5.25% Sodium hypochlorite (Group II) demonstrated the absence of superficial debris but presence of smear layer. Under high magnification ( $\times 2000$ ), the presence of smear layer was noticed at all three root thirds (coronal, middle, apical) in 71% of sections. Even though some samples showed the removal of smear layer partially in 29% of sections, it was clearly understood that the ability to remove the smear layer was incomplete. The smear layer removal was quite better in coronal third compared to middle and apical third. The scores of the sodium hypochlorite group shown that its efficacy was clearly better than that of the Normal saline (Group I). But it is proved that 5.25% Sodium hypochlorite is very much effective in removing the organic debris. It can be concluded that even though sodium hypochlorite partially removes the smear layer, it is incomplete and not acceptable.

The experimental irrigant Biopure MTAD (Group III) is now commercialized as Biopure<sup>TM</sup> MTAD (Dentsply Tulsa Dental, Tulsa, OK, USA). For optimal removal of the endodontic smear layer and to avoid inadvertent erosion of the intra-radicular dentine, a revised protocol had been proposed which involves the use of an initial rinse with 1.3 % NaOCl followed by the use of MTAD as the final rinse for a cumulated period of 5 min.<sup>15</sup> In the present study only MTAD was used without NaOCl rinse as, it has been recently reported in an invitro study that intrinsic staining of dentine occurred after natural light exposure of the NaOCl and MTAD—irrigated coronal and intra-radicular dentine and reduction in antimicrobial substantivity of MTAD after initial sodium hypochlorite irrigation.<sup>24</sup> A possibility is the reaction between Biopure MTAD and Sodium Hypochlorite which resulted in the formation of a brown

solution which was also reported, in the absence of light exposure, when Biopure MTAD was employed as the initial rinse followed by the use of different concentrations of Sodium Hypochlorite as final rinse<sup>19</sup>. Bench top reproduction of the phenomenon revealed that the redox reaction between Sodium Hypochlorite and Biopure MTAD resembled the mechanism of tetracycline tooth staining. However this phenomenon may be prevented by treating the Sodium Hypochlorite -irrigated dentine with Ascorbic Acid, an anti-oxidant, before the application of MTAD.<sup>25, 26</sup>

Scanning electron microscopic pictures of Biopure MTAD (Group III) demonstrated the absence of smear layer in and around dentinal tubules and whole dentinal surface was free of smear layer in 100% of sections in all the thirds. We found that agitation of MTAD resulted in better removal of the smear layer and debris specially in apical third. This was probably due to adequate penetration of the solution into the apical portion of the canal during irrigation. There are studies reported in literature which shows Biopure MTAD to be a superior antimicrobial solution and showed its superior antimicrobial activity compared with Sodium Hypochlorite or EDTA when tested against *Enterococcus faecalis*.<sup>27,28</sup> 3 % Doxycycline Hyclate, a tetracycline isomer present in Biopure MTAD act as both chelating agent as well as antimicrobial agent.

Ginger root is the rhizome of the plant *Zingiber officinale*, a herb that is used as a spice and also for its therapeutic qualities. The pungent substances namely gingerol and shagelol were identified as more active agents. Other than these compounds Ginger rhizome also contain, zingerone, paradol and volatile oil. The volatile oil consists of mainly mono and sesquiterpenes; camphene, beta-phellandrene, curcumene, cineole, geranyl acetate, folic acid, terphineol, terpenes, borneol, geraniol, limonene, linalool, alpha-zingiberene (30-70%), beta-sesquiphellandrene (15-20%), beta-bisabolene (10- 15%) and alpha-farnesene, in addition to the oleoresin zingiberol, the principal aroma contributing component as well as zingiberene, gingediol, diarylheptanoids and phytosterols.<sup>22</sup> In the present study scanning electron microscopic pictures of ginger extract (Group IV) demonstrated that 57% sections were shown more than 50% dentinal tubules open, 23% sections shown less than 50% dentinal tubules, 14% specimen shown specimen fully covered by smear layer and only 5% specimen shown complete removal of smear layer, which shows that Ginger extract was able to remove the debris, and organic part

and it was partially able to remove the smear layer. The smear layer removal was more in the middle third than coronal third and least at the apical third.

The overall results of the present study, confirmed that a heavy smear layer was observed at all levels in the specimens irrigated with Normal saline solution, consistent with previously published reports, which found that saline alone produces a sludge layer made up of residual debris that occluded the dentinal tubules. 5.25% Sodium Hypochlorite removes the organic tissue but not able to remove the smear layer proved in various studies, but due to its high antimicrobial property and its cost effectiveness it can be suggested to use this solution combined with biocompatible chelating agent in primary teeth. MTAD, when used alone with manual agitation, leads to effective removal of the smear layer in all thirds of the root canal of primary tooth, when used for recommended time (5min). Based on this, it can be suggested to use MTAD with manual agitation in primary teeth. It is interesting to see the results of Ginger extract (Group IV), where there was partial smear layer removal which was superior to 5.25% Sodium Hypochlorite (Group II), but less effective than Biopure MTAD (Group III). With its antimicrobial effectiveness proved in various studies, it can be introduced in pediatric dentistry as a newer root canal irrigant in horizon.

**Conclusion:** It is possible to draw the conclusion from the current study's results that Biopure MTAD is a useful tool for removing smear layers and does not substantially alter the dentinal tubules' structural makeup. The study recommends using Biopure MTAD, a novel solution, and ginger extract as a herbal substitute for primary teeth; however, because to the limitations of this study, more in vivo and in vitro research will be needed to evaluate their efficacy.

## References

1. Balto H, Salama F, Al-Mofareh S, Al-Yahya F. Evaluation of Different Irrigating Solutions on Smear Layer Removal of Primary Root Dentin. *J Contemp Dent Pract* 2015;16(3):187-191.
2. Patricia NT, Laura GP. Long-term outcomes of primary tooth pulpectomy with and without smear layer removal: A randomized split-mouth clinical trial. *Pediatr Dent* 2011; 33:316-20.

3. Pitoni CM, Figueiredo MC, Souza MAL. Ethylenediaminetetraacetic acid and citric acid solutions for smear layer removal in primary tooth root canals. *J Dent Child* 2011; 78(3):131-37.
4. Andrea GA, Lucianne CM, Laura GP. Role of cariosolv and different auxiliary chemical substances in the removal of bovine root canal smear layer. *J Oral Scien* 2006; 48(3):99-103.
5. Salama FS, Abdelmegid FY. Six percent citric acid better than hydrogen peroxide in removing smear layer: an in vitro pilot study. *Pediat Dent* 1994; 16(6):424-26.
6. Tunga U, Parlak E, Bodrumlu E. Effect of F-File on removal of the smear layer: A scanning electron microscope study. *Aust Endod J* 2011; 37: 65–9.
7. Baumgarmer JC, Mader CL. A scanning electron microscopic evaluation of four root canal irrigation regimens. *J Endod* 1987; 13:147-57.
8. Calt S, Serper A. Time-dependent effects of EDTA on dentin structures. *J Endod* 2002; 28:17–9.
9. Rahman MSA, Thangaraj S, Salique SM, Khan KF, Natheer SE. Antimicrobial and biochemical analysis of some spices extract against food spoilage pathogens. *Int J Food Safety* 2010; 12: 71-5.
10. Kandaswamy D, Venkatesh Babu N, Gogulnath D, Kindo AJ. Dentinal tubule disinfection with 2% chlorexidine gel, propolis, Morinda citrifolia juice, 2% povidine iodine and calcium hydroxide. *Int Endod J* 2010; 43: 419-42.
11. Bohora A, Hegde V, Kokate S . Comparison of antibacterial efficacy of neem leaf extract and 2% sodium hypochlorite against *E.faecalis*, *C.albicans* and mixed culture- an in vitro study. *Endodontology* 2010; 22: 8-12.
12. Prabhakar J, Senthil kumar M, Priya M S, Mahalakshmi K, Sehgal PK, Sukumaran VG. Evaluation of antimicrobial efficacy of herbal alternatives (Triphala and Green tea polyphenols), MTAD and 5% sodium hypochloride against *Enterococcus faecalis* biofilm formed on tooth substrate: An invitro study. *J Endod* 2010; 36: 83-6.
13. Lahijini MSS, Raoof kateb HR, Heady R, Yazdini D. The effect of *German chamomile (Matricaria recutita L.)* extract and tea tree (*Melaleuca alternifolia L.*) oil used as irrigants: a scanning electron microscope study. *Int Endod J* 2006; 39:190-95.

14. Rome WJ, Doran JE, Walker WA. The effectiveness of Gly-Oxide and NaOCl in preventing smear layer formation. J Endod 1985; 11:281-88.
15. Torabinejad M, Cho Y, Khademi AA, Bakland LK, Shabahang S. The effect of various concentrations of Sodium Hypochlorite on the ability of MTAD to remove the smear layer. J Endod 2003; 29(4):233-39.
16. Violich DR, Chandler NP. The smear layer in endodontics-a review. Int Endod J 2010; 43(1):2-15.
17. Torabinejad M, Khademi AA, Babagoli J. A new solution for the removal of the smear layer. J Endod 2003; 29:170-5.
18. Baker NA, Eleazer PD, Auerbach RE, Seltzer S. Scanning electron microscope study of the efficacy of the various irrigating solutions. J Endod 1975; 1:127-35.
19. Druttman ACS, Stock CJR. An in vitro comparison of ultrasonic and conventional methods of irrigant replacement. Int Endod J 1989; 22:174-8.
20. Pascon FM, Kantovitz KR, Rontani RMR. Influence of cleansers and irrigation methods on primary and permanent root dentin permeability: a literature review. Braz J Oral Sci. 2006; 5(18):1063-69.
21. Gulve MN, Gulve ND. Comparison of antimicrobial efficacy of Ginger extract and 2% Sodium Hypochlorite against *Enterococcus faecalis* using Agar diffusion method. J Ind Dent Assoc 2010; 4(10): 347-49.
22. Ali WM, Tawfiq NOM, Sulieman RT. Evaluation of antibacterial effects of Ginger extract when used as one component of the root canal sealers; (An in vitro study). Tikrit J Pharm Scien 2012; 8(2):162-70.
23. Maekawa LE, Oliveira LD. Effect of *Zingiber officinale* and propolis on microorganisms and endotoxins in root canals. J Appl Oral Sci 2013; 21(1):25-31.
24. Tay FR, Mazzoni A, Pashley DH. Potential iatrogenic tetracycline staining of endodontically treated teeth via NaOCl/ MTAD irrigation: a preliminary report. J Endod 2006; 32: 354-8.

25. Tay FR, Hiraishi N, Schuster GS. Reduction in antimicrobial substantivity of MTAD after initial sodium hypochlorite irrigation. *J Endod* 2006; 32:970–5.
26. Davies AK, Cundall RB, Dandiker Y, Slifkin MA. Photo-oxidation of tetracycline adsorbed on hydroxyapatite in relation to the light induced staining of teeth. *J Dent Res* 1985; 64:936–9.
27. Torabinejad M, Shabahang S, Aprecio RM, Kettering JD. The antimicrobial effect of MTAD: An in vitro investigation. *J Endod* 2003; 29(6):400-3.
28. Gulve MN, Gulve ND. Comparison of antimicrobial efficacy of Ginger extract and 2% Sodium Hypochlorite against *Enterococcusfaecalis* using Agar diffusion method. *J Ind Dent Assoc* 2010; 4(10): 347-49.